



First Presbyterian Church of Port Angeles



June 2025

Highlights



IN THIS ISSUE

Worship & Learning p. 3

Giving p. 4

Church Business pp. 5 - 6

Events Calendar p. 7

Summer Events p. 10

Memorial Services p. 11

VBS pp. 14 - 15

From the Heart

Dear Friends,

It has been a lot, hasn't it?

If you have kept abreast of the prayer chain lately or listened to the prayers of the people on Sunday mornings in the last several weeks, you know that our faith community has been through a lot together. We have been praying for healing, patience, and peace, for those who are ill, suffering, or caring for loved ones. We have prayed for comfort in times of death and loss. And we have helped bear the burden of unanswered prayers from the shoulders of our brothers and sisters in Christ. It has been a lot.

There are seasons like this in life—whether in our personal lives or our communal one—times when sorrows mount and come in waves of twos, threes, fours, or (Lord help us) even more. This seems like one of those times. Despite these losses and burdens, I am comforted by your prayers, I hope you feel the same. When I pray for others in their times of need, or when I anoint someone with oil, I am reminded of the church in prayer. When I

“From the Heart” continued

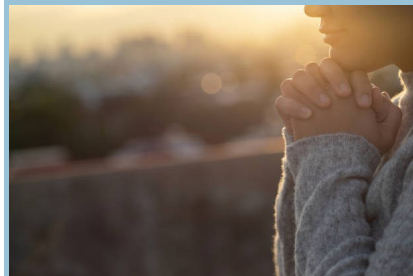
remind people the church is praying for them, I can often see a visible calm come over them, like when you pull a fleece blanket over you on a cold evening and immediately feel its warmth. Your prayers bring hope, comfort, and inspiration. Your prayers also alleviate the painful feelings of isolation that so often accompany anxiety and grief. Your prayers are powerful.

For those of you who think of prayer in singular terms like kneeling at one's bedside with hands clasped and head bowed, remember that you can pray in many ways. You can pray out loud or in silence; you can pray with a list or when a person or issue comes to mind; you can pray while walking, driving, weeding, or wherever. Writing cards, sending texts or emails, making phone calls, visiting, or making a meal for someone, are all forms of prayer, as far as I'm concerned. They all communicate the loving presence of God to those in need, which is often the basis of our prayers for one another—we want God to be with them.

So, thank you for your prayers and for making the losses we've faced recently more bearable. It has been a lot, but through prayer and the Spirit, we will make it through this time together.

Godspeed,

Mall



Worshipping and Learning



The Adult Christian Formation Committee is offering a series of summer classes titled *Being Presbyterian - Foundations of Presbyterian Discipleship*.

There are five sessions of study within this class. Each session will start with a short video followed by discussion.

The study sessions are as follows:

June 29 - ***A People of Grace***. For Presbyterians the first thing we need to know is that God is a God of Grace. This truth affects every aspect of our life.

July 13 - ***Wicked Bad***. Why do we talk about sin and evil?

July 27 - ***Who Do They Say I Am?*** We are asked to name Jesus as our Lord and Savior. What does that really mean?

August 10 - ***Update Your Faith System***. A discussion on study and worship and how they are vital aspects of being Presbyterian.

August 24 - ***Blessed to Be a Blessing***. A focus on fellowship and mission.

We hope you will come to some or all of these sessions. No preparation needed.

Sessions will be held in the upstairs classroom at regular Sunday School time.

Giving

Thank You, Church Family

Our June 7 TAFY meal contributions were very much appreciated. We delivered a variety of food and drinks.

We will have the opportunity to provide another TAFY meal on Saturday, August 2. The sign-up sheet will be at the Connection Center this month.

Proverbs 22:9 “Whoever has a bountiful eye will be blessed, for he shares his bread with the poor.”

Thank you for sharing and caring.

Little Free Pantry

As the Port Angeles Food Bank will be closed from June 30 -July 6, please consider helping us keep our Little Free Pantry full during that time. Any and all foods are acceptable, especially proteins, canned soups, fruits and vegetables, pasta and sauces, drinks, breakfast cereals, and foods kids might especially like. You have all been extremely generous. Thank you.



If you have some free time, (about 30 minutes per week), there are a few days when we don't have anyone to fill the church's pantry on 4th & Cherry Streets.

If you are able to help please contact Martha Bell or Nancy Jacobson.

The ***Sizzling Super Sale*** date will be announced soon, so please save quality items for this fundraiser in September.



Church Business Items

Session Actions

The Session met in a hybrid meeting in the church's upstairs classroom and via Zoom on Monday, June 16 at 7 pm, and the following actions were taken:

- Approved the request from Tim Pearson to be removed from the membership roles.
- Approved the investment of \$50,000 Equity Share Agreement payment from Pastor Matt with New Covenant Trust Company in accordance with our investment policy, to be funded \$25,000 from US Bank savings account and \$25,000 from cash held at NCTC in the money market account, which will leave enough cash in the US Bank account to pay the final bill to Hoch Construction.
- Approved taking \$40,000 of the ERC Credit and investing it in the money market at NCTC, leaving the remaining \$6,000 in cash for the Rock the Block housing project with Habitat for Humanity.
- Approved the following guest preachers: David Moffit on 7/27/25, Stan Jacobson on 8/3/25, Denise

Easter on 8/24/25, and Paul Mattson on 8/31/25.

- Approved that when not on display per the policy, both the church and American flags will be kept on their poles, upright and unobstructed in the corner to the west of the first set of doors from the east on the south wall of the fellowship hall (east of the room divider).

Congregational Meeting

There will be a congregational meeting on Sunday, July 13, immediately following the second service, for the purpose of electing Jodee Force to serve as ruling elder for the class of 2026.

Financials

May 2025

Income Y-T-D

\$190,058

2025 Income Budgeted

\$412,380 Expenses Year-to-Date
(\$166,131)

2025 Expenses Budgeted

\$419,704

Capital Spending Year-to-Date

\$32,800

2025 Annual Capital Budget

\$88,300

Water Damage Building Repairs thus
far: (This includes 2024 & 2025)

(\$229,819)

^Water Damage Insurance Payment

\$197,019

*The remaining Water Damage
payments will be a capital expense.

A donation from a former deacon paid
for the new communion ware.

Generosity continues for the Little Free
Pantry.



Where have you
experienced joy in the
Christian community?

July

Sun	Mon	Tue	Wed	Thu	Fri	Sat
		1 8 am FISH Company	2 9 am Women's Bible Study 9 am "Chain Gang" Traylor's	3 1 pm Love Box 3 pm Mission & Outreach	4 Office Closed 	5
6 8:30 and 11 am Worship Service	7 2 pm Buildings & Grounds	8 8 am FISH Company	9 9 am Women's Bible Study 9 am "Chain Gang" Traylor's	10 11 am John Crawford Memorial Service First Presbyterian	11 11 am Will Streuer Memorial Service First Presbyterian	12 11 am Chuck Whitney Memorial Service Holy Trinity Lutheran
13 8:30 and 11 am Worship Service 9:45 am Sunday School Congregational Meeting 12:15 pm	14	15 8 am FISH Company 12:30 pm Community Life 2 pm Stewardship 4 pm Deacons Meeting	16 9 am Women's Bible Study 9 am "Chain Gang" Traylor's	17 1 pm MANNA Monthly Meeting	18	19
20 8:30 and 11 am Worship Service	21 7 pm Session	22 8 am FISH Company	23 9 am Women's Bible Study 9 am "Chain Gang" Traylor's	24	25	26
27 8:30 and 11 am Worship Service 9:45 am Sunday School	28 1 pm Prayer Shawl Ministry	29 8 am FISH Company	30 9 am Women's Bible Study	31		



Is this our church?

Last month the painting above was given to the church office. The owner was cleaning out closets in her home and found this. She thought it was First Presbyterian Church from many years ago.

What do you think? Some members have said this picture resembles our church when it was Holy Trinity Lutheran.

How does this older painting compare or contrast with the painting on the right done by Beth Ann White in 2013?

What do you think?



2013 painting by Beth Ann White



Presbyterian Mission
**Presbyterian
 Disaster Assistance**



June 2025

9012
 First Presbyterian Church
 139 W. 8th St.
 Port Angeles, WA 98362

Dear Friends:

As I write this letter of appreciation for your generous donation of \$1,750 on 5/14/2025 for DR000148 Disaster Relief-General Relief & PDA Support, I am mindful that we are in the season of Eastertide. The Eastertide liturgical season spans the 50 days between the resurrection of Jesus and Pentecost. Christian tradition holds that Jesus spent 40 days after the resurrection with his disciples preparing them for what was to come. We read in the book of Acts that Jesus instructed the disciples to stay in Jerusalem where they would receive power when the Holy Spirit would come upon them, and they would become the church.

The very last words of Jesus to his disciples before being lifted up to the heavens were in the form of a charge. "...and you will be my witnesses in Jerusalem, in all Judia and Samaria, and to the ends of the earth." (Acts 1:8 NRSV)

The church has witnessed to the love and grace of Jesus in so many wonderful ways. One of the meaningful ways we witness to the healing love of Christ is through the work and ministry of PDA. The charge of Jesus to be his witnesses throughout the world is lived out daily through your generous support.

There are several recent examples to lift. Through your support a facility opened that will provide a home for 9 veterans who are unhoused because of tornadoes that destroyed their community. Congregational faith leaders who are living through the aftermath of a major disaster are offered support for relaxation, self-reflection, and respite. Volunteer work groups continue to be hosted in communities impacted by disasters that have long faded from the news. These volunteers bring hope that it is possible to recover. Those impacted by a devastating earthquake are receiving immediate emergency needs, such as shelter, food, non-food items, WASH (water, sanitation and hygiene) medicines and more.

You are witnesses to the power and hope of the resurrection. You are witnesses to the new life, new wisdom, renewed hope all promised in the resurrection of Jesus. Through your support we have been witnesses in Kentucky, California, Puerto Rico, Myanmar, and beyond.

Peace,

Rev. James J. Kirk,
 Associate for Disaster Response (U.S.)

**Scan this QR code to
 read our annual report**



**Or visit
pda.pcusa.org/mosaic**

pda.pcusa.org

O: (502) 569-5839 | TF: (800) 728-7228 x5839
 100 Witherspoon Street | Louisville, KY 40202

Summer Events

Youth Group

A summer theatre trip is planned in August. Our own Isaac Wendel will be in the Port Angeles Community Players' production of *Alice in Wonderland*. Look for details in the August Highlights and eNews.

Lavender Potluck Picnic

Sunday, August 3

B & B Lavender Farm

It's time once again for a summer favorite, our annual picnic in the lavender barn. Bonnie & Bruce McCloskey are inviting everyone to their farm to experience a working lavender farm.

Please bring a dish to share as well as tableware that you will use. Water and lavender punch will be provided.

After our meal, we will learn about the unique lavender process to get it ready for market. The gift shop will also be open.

Sign-up sheets will be at the Connection Center soon.



Memorial Services

Thursday, July 10, 11 am

First Presbyterian Church



A memorial service for *John Crawford* is planned for Thursday, July 10 at 11 am at First Presbyterian Church. There will be

a reception to follow.



Saturday, July 12, 11 am

Holy Trinity Lutheran Church

A memorial service for *Chuck Whitney* is planned for Saturday, July 12 at 11 am at Holy Trinity Lutheran Church, 301 E Lopez Avenue, Port Angeles. Pastor Matt will be presiding.

There will be a reception to follow.

Friday, July 11, 11 am

First Presbyterian Church



A memorial service for *Bill (Will) Streur* is planned for Friday, July 11 at 11 am at First Presbyterian Church.

There will be a reception to follow.

If you would like to send condolences to Bill (Will) Streur's family please send them to his son's address below.

Taber Streur

18121 NE 125th Street

Redmond, WA 98052

Lower Elwha Tribe Canoe Journey

Canoe Landing

Thursday, July 31

Protocol & Celebration

August 1 - 5

Celebrate Indigenous tradition and community at the Paddle to Elwha canoe landing on **July 31, 2025, at Lower Elwha Beach** (end of Charles Road). Hosted by the Lower Elwha Klallam Tribe, this powerful event welcomes tribal canoe families from across the Pacific Northwest with a traditional landing ceremony, cultural sharing, and community gathering on the shores of the Elwha River.

This is an opportune time to learn more about the people who have lived here for 1000's of years and their customs.

You can help make crafts at the Elwha Heritage Center everyday for the Elwha giveaway during their protocol.

Look for further information in upcoming editions of the eNews.





2	Jenna Johnson
2	Rosalyn Taylor
3	Cynthia McVicker
3	Mike Sofie
9	Ruby Jo Christensen
13	Maggie Miller
13	Micki McNeil
16	Miriam Cobb
21	Vicki Anderson
22	Andrea Fry
23	Larry Buckley
26	Linsey Monaghan
27	Pat Davies
28	Pastor Matt
29	Perry Keeling
30	Pat Warren
31	Ruth Brown



1	Todd & Michele Haworth
17	Jim & Chris Buckmaster
28	Reed & Jennie Wendel





Save the Date!

TRUE NORTH
Trusting Jesus in a Wild World

This summer, get ready to hit the trails
for the ultimate Alaskan adventure!

Vacation Bible School

August 4th-8th 9am-noon

Ages PreK - 5th grade

First Presbyterian Church

Call Church office for registration information

Vacation Bible School

Vacation Bible School is coming soon. The dates for VBS this year are August 4 - 8, Monday through Friday, 9 am till noon.

This year's theme is called *True North - Trusting Jesus in a Wild World*. Our church will be transformed into an Alaskan landscape. Each day will be filled with Bible learning experiences the children will see, hear, and touch. There will be hands-on experiments, team building games, unforgettable Bible songs, and of course tasty snacks. These are just a few of the standout activities that will help faith flow into real life.

What can you do? I am asking you to prayerfully consider how you can help. We need crew leaders, kitchen helpers, and decorators. Do you have any artificial trees to help us build a forest?

We also need camping gear, tents, fire pits and anything else to make our church feel like the Alaskan wilderness. Each day a different animal will be the host. Our five animals are Day 1 - an otter, Day 2 - a crab, Day 3 - a bear, Day 4 - a bald eagle, and Day 5 - a moose. If you have any of these animals that we could use for decorations, let me know.



Of course, what we need most is children! The program is open to children 3 ½ years old through those who have just finished 5th grade. VBS is \$10 per child, with scholarships available. No child will be excluded due to cost. Who could you invite? Your kids? Grandkids? Neighborhood kids? Please pray that we will have our church filled with youth.

Additionally, we are looking for young teens ages 12-18 who would make great youth leaders.

Contact pam.s.carnahan@gmail.com.

Excitedly, Pam Carnahan, VBS Director



First Presbyterian Church

139 W. 8th St., Port Angeles, WA 98362
360-452-4781 | fpcpa.org

Worship Services

Sundays 8:30 and 11 am

Office Hours

Monday - Thursday, 10 am - 3 pm

Closed for Lunch, 1 - 2 pm on Monday

Closed on Friday

The office is behind the church building off the alley and is handicapped accessible.

Pastor Matt Paul, pastor@fpcpa.org

Lauren Corder, Office Manager, administrator@fpcpa.org

Cathi Hughes, Office Assistant,
office@fpcpa.org



The First Presbyterian Church of Port Angeles is a community of people of all ages who believe in Jesus Christ as the Son of God and who seek to follow His teachings. We come together to worship God, to grow in our love and support for each other, and to learn about God's will for our lives. Guided by the Holy Spirit, we go out to the community and the world to share our faith and to serve others.

Online Resources

Church Website: fpcpa.org

Online Worship: fpcpa.org/worship

Giving Online:

Look for this button on our website.

GIVE ONLINE