



April 2025

Highlights



IN THIS ISSUE

Holy Week Services p. 3
New Studies pp. 4 - 5
Events pp. 6 - 7
Giving pp. 8 - 10
Events Calendar p. 11
Community pp. 12 - 14
Church Business Items p. 15

From the Heart

Dear Friends in Christ,

Many of you are aware of the scholarship notebooks that students at Port Angeles High School are required to put together in their senior year. The notebooks are essentially resumes with biographical information, personal statements about future plans, letters of recommendation, and a listing of their work experience, extracurricular activities, volunteer service, achievements, and academic transcripts. The notebooks are made available to local organizations to use to determine recipients for their scholarships.

As a member of the K.O. Erickson Charity Trust, which awards two scholarships each year, I have the privilege of reading dozens of these notebooks each year.

They offer a unique view into the lives of high school students in our community: stories of tragedy, abuse, neglect—and of perseverance and overcoming. It never ceases to amaze me how many obstacles some students have to work through just to attend school, let alone to earn their diploma. Some students are

“From the Heart” continued

homeless, work full-time jobs (or hold multiple jobs), have caretaking responsibilities for siblings or family members, and still find time to go to school and participate in extracurricular activities. Of course, there are also students who have stable living circumstances and are well-supported in their academic pursuits. The number of students who fall into the former category, however, is surprisingly high.

Teachers, paraeducators, administrators, and staff dedicate themselves to the task of student success. Community support comes from volunteers, like those in our congregation. It warms my heart to think that our church’s efforts—baking cookies, tutoring, donating clothing and school supplies, and praying for students’ welfare—may have played some part in their success. Your work, your prayers, and your cookies make a difference!

Hebrews 13:16 says, “Do not neglect to do good and to share what you have, for such sacrifices are pleasing to God.” The nature of sacrifice, of doing things for others, is that we do not always have the benefit of seeing the outcome of our labor. I cannot prove that cookies, clothes, or supplies from First Presbyterian helped a student from an unsupportive home graduate from high school, but I do believe that every effort of compassion, self-sacrifice, and tending to the needs of others, creates a better community...to the benefit our youth, and to the glory of Christ.

Godspeed,

Matt



Worshipping and Learning

Holy Week Services



Sunday, April 13

8:30 am & 11:00 am



Friday, April 18

Worship at 7:30 pm



Thursday, April 17

Soup Supper at 6:30 pm,
Worship at 7:30 pm



Sunday, April 20

8:30 am & 11:00 am
Easter Breakfast 9:30—
10:30 am

Worshiping and Learning, continued

Lent

Thursday Soup Supper and Vespers Services

Through April 9, join us for a soup supper at 6:15 pm followed by vespers service at 7 pm.

Adult Sunday School

**Sundays, 9:45 am,
March 9 - April 13**

We will continue our study of the prodigal son based on the book *The Return of the Prodigal Son: A Story of Homecoming* by Henri Nouwen.

Our next study will be from the book *The Sermon on the Mount* by Amy - Jill Levine and will begin on Sunday, April 27.

Elementary Sunday School

Sundays, 9:45 am

We are getting ready for Easter and learning from a unit called, "The Week That Changed the World." We're having a lot of fun singing worship songs, doing some crafts and learning.

Small Talks on Big Issues

Thursdays, 7pm

May 1, 8, 22, 29

**Session Five: Sexual
Orientation, Gender
Identity, and the Bible**

Our LGBTQ+ brothers and sisters in Christ have suffered greatly throughout the Church's history, and it is only in recent decades that Christians have found ways to include and embrace the gifts of all believers regardless of sexual orientation or gender identity.

It is an ongoing conversation that many are still having trouble with. What does the Bible say about sexual orientation and gender identity? How can new scholarly perspectives inform this conversation? How can these perspectives reshape the way we interact with LGBTQ+ family members to bring healing for a long history of harm caused by intolerance in Jesus' name?

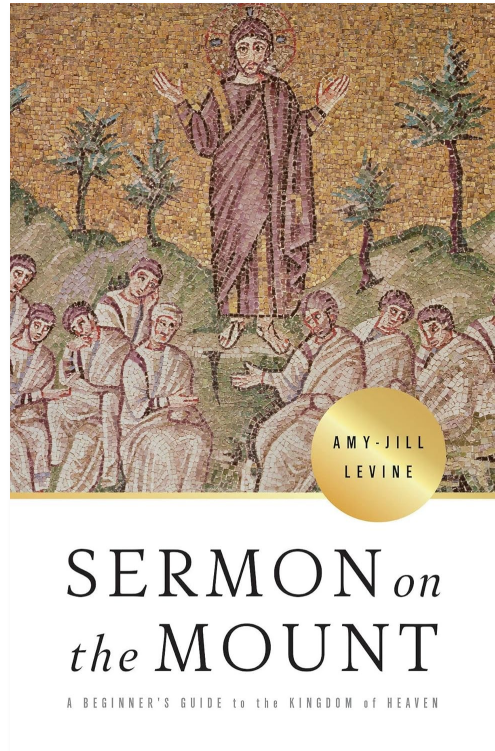
Worshipping and Learning, continued

Next Adult Sunday School Study

begins April 27, *Sermon on the Mount: A Beginner's Guide to the Kingdom of Heaven* by Amy-Jill Levine

In *Sermon on the Mount: A Beginner's Guide to the Kingdom of Heaven*, Dr. Amy-Jill Levine introduces the major topics in the Sermon on the Mount, explains historical and theological contexts, and shows how the words of Jesus echo his Jewish tradition and speak forward to reach hearts and minds today.

"Levine has done it again. She blends extensive biblical knowledge with wisdom and wit. The result is an engaging and humorous read for lay person and scholar alike. I highly recommend this book," said one reviewer.



Books will be available in the office and at the Connection Center in early April.

Spring Study

Events



Easter Egg Hunt

Sunday, April 13, between services

There will be an egg hunt for children nursery age through 5th grade. Please sign up at the Connection Center.

Hour of Praise

Sunday, April 13, 2 pm

Sanctuary

Please join us for an uplifting time of song and worship. You will leave feeling renewed.

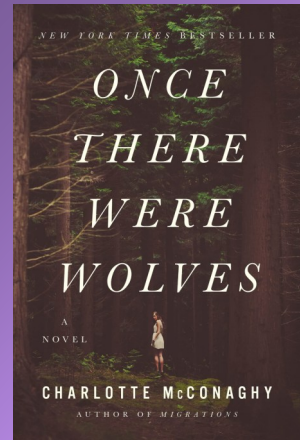
Book Club

Thursday, April 17, 10:30 am

Fellowship Hall

Once There Were Wolves
by Charlotte McConaghy

Inti Flynn arrives in Scotland with her twin sister, Aggie, to lead a team of



biologists tasked with reintroducing fourteen gray wolves into the remote Highlands. She hopes to heal not only the dying landscape, but Aggie, too, unmade by the terrible secrets that drove the sisters out of Alaska.

Easter Breakfast

**Sunday,
April 20,
9:30 -
10:30
am**



Fellowship Hall

Come and join the festivities and celebrate the Risen Christ! Bring your favorite quick bread, muffins, cinnamon rolls, cooked breakfast casserole or fruit tray. Oven space is limited for warming only. Enjoy fellowship with your church friends and family. Sign up at the Connection Center.

Events, continued

Reel Reflections Dinner and a Movie Edition

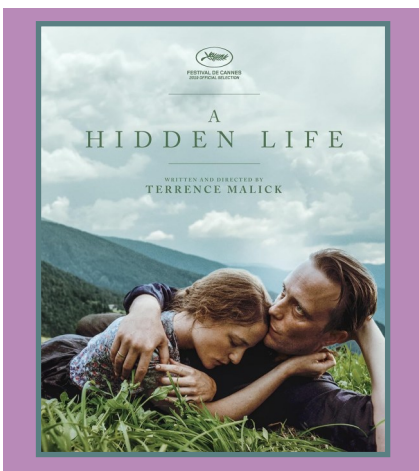
A Hidden Life

Thursday, April 24, 6:00 pm

Hybrid: In person in the Fellowship Hall or by Zoom

Based on real events, *A Hidden Life* is the story of an unsung hero, Bl. Franz Jägerstätter, who refused to fight for the Nazis in World War II. When the Austrian peasant farmer is faced with the threat of execution for treason, it is his unwavering faith and his love for his wife, Fani, and children that keeps his spirit alive.

If you are bringing your dinner please arrive by 5:30 pm. This movie is long and will start at 6:00 pm.



Mexican Train Dominoes

Saturday, April 26, 2 pm

Fellowship Hall

Climb aboard for an afternoon of Mexican Train Dominoes. If you have a set of double 12 dominoes, please bring it. If you have never played this game, don't let that keep you away. It is easy to learn.

Melanie DeBiddle, 360-477-3643

Youth Group Movie Night

Saturday, April 26, 5 pm

B & B Lavender Farm

Calling all youth! Join us for our second annual movie night in the barn. This was so much fun last year! Burgers and drinks will be provided. Please bring veggies, fruit, or a dessert to share. Also, it can be chilly in the barn, so make sure to dress warmly and bring blankets with you. What are we watching? It's a movie called *The Miracle Season*, starring Helen Hunt and William Hurt. It's based on the true story of the 2011 Iowa City West High's girls' volleyball team after the death of one of their players. Before we watch the movie on the 26th, you will learn why this movie is so special to Becca and Pastor Matt.

Giving

TAFY Update

Our next date to support TAFY with a meal is **Saturday, April 5**. If you can contribute a portion of the meal please sign up at the Connection Center.

Thank you ~ Dona Hair

Port Angeles Food Bank

There are a number of church members who volunteer on the **second Thursday of each month at 10 am**. Contact Barb Pappas at bpappas378@gmail.com

if you would like to know more about volunteering at the Food Bank.

Easter Breakfast Help Needed



Easter Egg Hunt



Please consider donating candy, stickers, coins, toys, and seeds for the hunt. There is a basket for your donations in the Fellowship Hall.

We will be celebrating the Risen Christ at our annual Easter Breakfast. Helping hands are needed to make the workload lighter. Please consider helping on any of the following tasks. There are sign-up sheets at the Connection Center. Thank you.

Saturday, April 19, 2 pm

- Set up tables and chairs.
- Decorate tables.

Sunday, April 20, 8 am

- Prepare beverages (coffee, tea, water).
- Put away food when received.
- Set up food on buffet tables.
- After breakfast, clear and clean the tables and kitchen.

Giving continued

Mission & Outreach

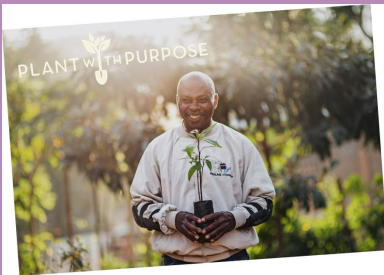
Plant With Purpose

After our Mission Fair last October I have been receiving *Plant with Purpose* newsletters. I find them inspiring and am glad First Presbyterian supports this project.

Here are some of my favorite things that give me inspiration:

- If you care about **immigration**, you'll learn that the opportunities *Plant With Purpose* creates enable people like Don Carlos in Oaxaca to stay at home with their families by removing the need to look for work elsewhere.

plantwithpurpose.org



- If you care about **education**, you'll discover that in rural areas, poverty due to unproductive farming is one of the most common reasons children are taken out of school. This especially disrupts girls' education. However, the program has improved girls enrollment by 44%.
- If you care about **human trafficking** you should know some of the people most vulnerable to exploitation are like the populations *Plant with Purpose* works with: marginalized communities who have moved from rural areas. When families thrive, the risk to fall prey to trafficking is significantly reduced.

Plant with Purpose continues working at the crossroads of economic empowerment, environmental restoration, and spiritual renewal because they see over and over that it is the crossroads of so much more.

Submitted by Martha Bell



Giving, continued

Special Offering: One Great Hour of Sharing

Continues through April 20, 2025

One Great Hour of Sharing supports efforts to relieve hunger through the Presbyterian Hunger Program, to promote development through the Presbyterian Committee on the Self-Development of People, and to assist in areas of disaster through Presbyterian Disaster Assistance.

This year we will be asking for gifts on **Palm Sunday, April 13**. You may give online or write a check to the church and put OGHS on the memo line.

Easter Lilies

Donations for Easter lilies for the sanctuary will be taken the week before Easter Sunday, **April 14 - 17**.

Please include a note indicating who you are remembering or honoring and bring them to the office during office hours.

Monday - Thursday, 10 am - 3 pm
Closed for Lunch, 1 - 2 pm on Monday
Closed on Friday

Dear church family,
Thank you for the Valentine's snack box! It was such a nice surprise to find on my porch at the start of midterm exam season. The snacks are delicious and I appreciate you thinking of me!
- Emma Weller



April

Sun	Mon	Tue	Wed	Thu	Fri	Sat
		1 8 am FISH Company 11:30 am Community Life 6:45 pm Praise Team	2 9 am Women's Bible Study 9 am "Chain Gang", Traylor's 6:15 pm Soup Supper 7 pm Vespers Service	3 1 pm Love Box 3 pm Mission & Outreach	4	5 3:45 pm TAFY Dinner Donations
6 8:30 and 11 am Worship Service 9:45 am Sunday School	7 7 pm Adult Christian Formation Meeting	8 8 am FISH Company 5 pm Youth CF 6:45 pm Praise Team	9 9 am Women's Bible Study 9 am "Chain Gang", Traylor's 6:15 pm Soup Supper 7 pm Vespers	10 10 am Food Bank Helpers	11	12
13 8:30 and 11 am Worship Service Easter Egg Hunt 2 pm Hour of Praise 	14 1 pm Naomi Circle 2 pm B,G,P Committee Meeting	15 8 am FISH Company 4 pm Deacons Meeting 6:45 pm Praise Team	16 9 am Women's Bible Study 9 am "Chain Gang", Traylor's	17 10:30 am Book Club  6:30 pm Soup 7:30 Worship	18  7:30 pm Worship	19
20 8:30 and 11 am Worship Service 9:30 am Easter Breakfast 	21 7 pm Session	22 8 am FISH Company 6:45 pm Praise Team	23 9 am Women's Bible Study 9 am "Chain Gang", Traylor's	24 6:00 pm Reel Reflections Dinner and a Movie A Hidden Life	25	26 2pm Mexican Train Dominoes 5 pm Youth Group Movie Night at B&B Farm
27 8:30 and 11 am Worship Service 9:45 am Sunday School	28	29 8 am FISH Company 6:45 pm Praise Team	30 9 am Women's Bible Study 9 am "Chain Gang", Traylor's			



- 1 Sue Mayo
- 4 Lucy Monaghan
- 5 Debbie Howe
- 8 Paul Stutesman
- 11 Monty Howe
- 11 Seigfried Schneider
- 14 Trudy Smith
- 15 Leila Reyes
- 18 Michele Haworth
- 18 Todd Haworth
- 22 Barb Pappas
- 22 Jill Sharkey
- 22 Susan Fisher
- 24 Emma Weller
- 25 Ardith Schuchardt
- 25 Bruce Emery
- 26 Carrie Heins
- 27 Bonnie Davison
- 28 Dona Hair
- 30 Marcia Logan
- 30 Todd Ortloff

Community

Happy Birthday Loretta

Loretta Chapman celebrated a big birthday with her Wednesday Ladies Bible Study group in February.



- 3 Chris & Peter Watkins
- 10 Steve & Brenda Lovik
- 12 Monty & Debbie Howe
- 18 Bob & Dolly Hutchings
- 23 Michele & Rob Fraker

Team Marty

“Team Marty” helped Marty Melcher move to Brookdale Foundation House in Federal Way on February 24. She is now 2 miles from cousins Tony & Bonnie Armstrong who are caring for her. Her moving heroes included Ross & Vee Canning; Marlene Moore, her cello teacher; neighbor Cathy Bednarski; prayer warrior Celia Walkes-Duff; Michael; Greg & Rainy Birch; friends from work, Paula & Jay Richter; & sisters in Christ Susan Fisher, Chris Watkins, & Bobbie Buckley. Everyone loved Marty in a special way to make her move a success.



Marty Melcher



Marty supervising the team

Community, continued

Estate Sale

John and Marty Melchers' House

1816 W 6th Street, Port Angeles

Friday, April 11, 9 - 2, Friends & Family

Saturday, April 12, 9 - 2, Public Sale

Let's get Marty settled into her new facility. Let's get her things new homes and offer her a prayer by signing the Happy Housewarming card that will be at the estate sale. Church family members are welcome to come either day to shop the estate sale.



Counters Needed

We are blessed to have a few faithful counters who count donations and prepare them for deposit. Sometimes these faithful few need a day off. We are looking for a few more diligent members to join their ranks so that the process goes smoothly when someone needs to be gone on counting day.

Counters count on Mondays, except on bank holidays. If you have good attention to detail and process, are competent with computers and have a willing heart, pray on this. Listen to see if God is calling you to this area of his service. If you are meant to serve in this position, please contact Tom McCullough at thlbm@olympus.net.



Has anyone ever used a passage in the Bible to hurt you? If so, which one?

Church Business Items

Session Actions

The Session met in a hybrid meeting in the church’s upstairs classroom and via Zoom on Monday, March 17, at 7 pm, and the following actions were taken:

- Accepted the following into membership at FPCPA: John and Josie Davis by certificate of transfer from Grace Presbyterian Church in Plano, TX; Ben and Therese Carroll by re-affirmation of faith; and Larry Buckley by profession of faith.
- Approved Pastor Matt’s request for time off from 9/28/25 – 10/3/25 (including Sunday 9/28) to attend the Pastor Renewal Retreat at Ingalls Creek Enrichment Center.
- Approved waiving the requirement for Alcoholics Anonymous to provide their own liability insurance to use the church building because it is a financial hardship for the group.

Capital Spending Year-to-Date	\$0
2025 Annual Capital Budget	\$25,500
*Capital Projects Gift Income from 2024	\$27,719

*We were given a gift to be specifically used for the building.

^Water Damage Building Repairs thus far: (This includes 2025 & 2025) (\$190,386)

^Water Damage Insurance Payment \$188,653

^The water damage insurance \$ has been spent as of January 2025.

In February our generous congregation has both supported both the mission and operations of our church as well as One Great Hour of Sharing, the Christmas grocery card program, the Second Mile Fund, the children’s clothing closet, the Little Free Pantry, and by sending Valentine’s boxes to our college kids.

Financials

February 2025

Income Y-T-D	\$94,658
2025 Income Budgeted	\$412,380
Expenses Year-to-Date	(\$58,315)
2025 Expenses Budgeted	\$419,704

First Presbyterian Church

139 W. 8th St., Port Angeles, WA 98362
360-452-4781 | fpcpa.org

Worship Services

Sundays 8:30 and 11 am

Office Hours

Monday - Thursday, 10 am - 3 pm

Closed for Lunch, 1 - 2 pm on Monday

Closed on Friday

The office is behind the church building off the alley and is handicapped accessible.

Pastor Matt Paul, pastor@fpcpa.org

Lauren Corder, Office Manager, administrator@fpcpa.org

Cathi Hughes, Office Assistant,
office@fpcpa.org



All Church Retreat Camp David Jr.

May 16 - 18, 2025



Online Resources

Church Website: fpcpa.org

Online Worship: fpcpa.org/worship

Giving Online:

Look for this button on our website.

GIVE ONLINE

Mark your calendars to attend the 2025 all-church retreat
Friday, Saturday & Sunday, May 16 - 18.

Registration forms are now available and in the Fellowship Hall.